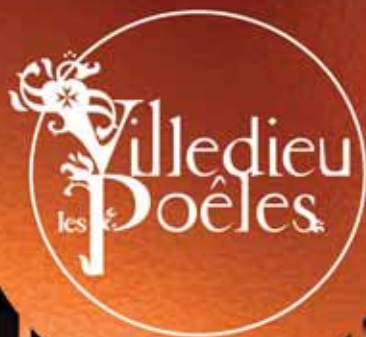




2010-2011



Welcome to the town  
of metal craftsmanship



The Tourist Office, the Association Villedieu MADE and the local businesses welcome you to heart of Villedieu-les-Poêles and the surrounding area and are happy to announce the opening in 2010 of the brand new Tourist Office & Centre for Artisanal Craftsmanship.

***la vitrine des Métiers d'Art.***

Program of exhibitions for 2010:

From 12<sup>th</sup> to 2<sup>nd</sup> May: **"Florilège de métiers d'art"**

From 7<sup>th</sup> May to 4<sup>th</sup> July: **"Dépours par la terre"**

From 9<sup>th</sup> July to 12<sup>th</sup> September: **"Fantaisies métalliques"**

From 17<sup>th</sup> September to 31<sup>st</sup> October: **"R. Pouchin (1915-2001) : Villedieu en clichés"**

From 5<sup>th</sup> Novembre to 30<sup>th</sup> January 2011: **"Cadeaux d'art"**

*Mr Christian Gosselin*

President of the Villedieu-les-Poêles Tourist Office.





# Summary

<b>History</b> .....	<b>p.5</b>
<b>Heritage of Villedieu-les-Poêles</b>	
- <i>Discover the historic courtyards</i> .....	<b>p.6</b>
- <i>The Museum of Copper Pans and Lace</i> .....	<b>p.7</b>
- <i>The Museum of Norman Furniture</i> .....	<b>p.7</b>
<b>Villedieu, the town and its traditional trades</b> .....	<b>p.8</b>
- <i>The Copper Workshop</i> .....	<b>p.9</b>
- <i>The House of Pewter</i> .....	<b>p.10</b>
- <i>The Bell Foundry</i> .....	<b>p.10</b>
- <i>Other Artisanal Crafts</i> .....	<b>p.11</b>
<b>Children's Activities</b> .....	<b>p.12</b>
- <i>Pottery lessons with Eve Hassan</i>	
- <i>The Swimming pool</i>	
- <i>The Zoo at Champrepus</i>	
<b>Walking and Hiking</b> .....	<b>p.13</b>
<b>Food and drink</b> .....	<b>p.14</b>
<b>Where to stay</b> .....	<b>p.17</b>
Plus :	
- <b>A practical guide to our business partners</b> .....	<b>p.22</b>
- <b>Pastimes in Sud Manche</b> .....	<b>p.23</b>

# Plan of the town



Twinned with **Horn Bad Meinberg** (Germany) and **Saint Sauveur** (Jersey)



# History



## From St John of Jerusalem to Normandy

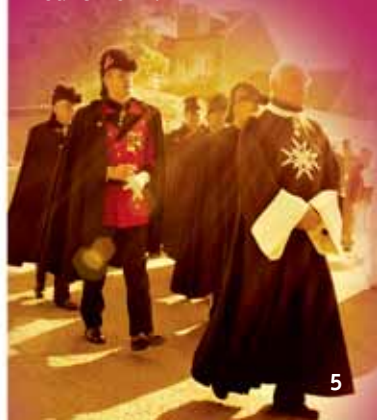
From the time of the first Crusade, the reputation for care and protection offered by the Hospitaliers of the Order of St John of Jerusalem prompted a wave of donations from all over Europe. Around 1130AD, Henry Beauclerc 1<sup>st</sup>, King of England and Duke of Normandy gave to the Hospitaliers the small hamlet of Siennêtre, situated in the valley of the Sienne. Siennêtre then became known as Villedieu les Saultchevreuil and became the first Commandery in France.

After this, the history of Villedieu faded into obscurity. Less than two centuries after the founding of the Commandery, it became one of the most dynamic copperware manufacturers, in an area devoid of copper deposits. What mysterious role did the Hospitaliers play in the birth of this industry?

Throughout the 18<sup>th</sup> and 19<sup>th</sup> centuries the copperware industry employed some 1700 workers. Villedieu les Saultchevreuil became Villedieu-les-Poêles (cooking pots). The inhabitants of Villedieu, became known as the "**Sourdins**" (meaning deaf) because the work of the metal beaters was so loud that they often became deaf.

## What of the Knights of Malta ?

After an eventful history, the official name for the Hospitalier is now the **Order of the Sovereign Military Hospitalier of St John of Jerusalem, Rhodes and Malta**. Every four years, Villedieu celebrates the Grand Sacre (the Great Rite) of the Knights of Malta. **The next Grand Sacre takes place in June 2012.**





## Heritage of Villedieu-les-Poêles

Barely affected by the destructions of the Second World War, Villedieu-les-Poêles has retained a very individual urban style bequeathed to it by the Hospitaliers and the coppersmiths. Originally the town comprised of some forty courtyards, but now only 35 remain, these represent the original core of the copper-making industry with an array of quaint cobbled pathways leading down to the river.

### Not to be missed :

Why not discover Villedieu-les-Poêles with the help of our pocket guide? It is written in six languages (**English, German, Dutch, Spanish, Italian & French**) and is on sale at the Tourist Office for 1.50€

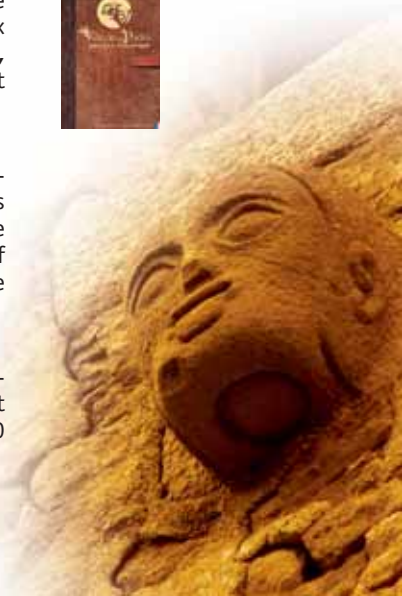


### New for 2010

From 1st July 2010 there will be new sign-posting around the town in several languages indicating the route to take to discover the history of the arts & crafts industry of Villedieu-les-Poêles dating back the Middle Ages.

### New for 2010

Guided tours during the evening with the participation of the "Théâtre en Partance". Depart from the Tourist Office, every Friday at 20h30 during July and August. tariff: 5€ per adult.





## THE MUSEUM OF COPPER PANS AND LACE

The "Cour du Foyer" is one of the most attractive courtyards and is classified as an Historic Monument. Here you will discover the daily routine of the metal craftsmen and their lace-making wives. The museum features: a film, a former-style workshop, an exhibition of contemporary work by Daniel Delalande and demonstrations of lace-making using bobbins. Villedieu is considered to be one of the seven stages on the Normandy Lace Route (Aençon-Bayeux-Caen-Courseulles-La Perrière-Argentan).



25 rue Gal-Huard - Cour du Foyer  
Open:

From 1<sup>st</sup> April to 15<sup>th</sup> November from 10h to 12h30 and 14h to 18h30. Closed all day Monday, Tuesday morning and Sunday morning (Closed every other Sunday)

☎ +33 (0)233 693 344

[www.museesvilledieu.sitew.com](http://www.museesvilledieu.sitew.com)

Adults 4€, Children 2€\*



## THE MUSEUM OF NORMAN FURNITURE

The Museum has an exceptional collection of craftwork well documented in Norman tradition. You will be impressed by the exemplary skills of the cabinet-making – considered by many as the people's art. Admire the reconstruction of the two room interior: one from Coutances and the other from the Pays d'Auge. Brochures are at your disposal as well as an explanatory film.

9 rue du reculé

Open: From 1<sup>st</sup> April to 15<sup>th</sup> November from 10h to 12h30 and 14h to 18h30. Closed all day Monday, Tuesday morning and Sunday morning (closed every other Sunday).

☎ + 33 (0)233 611 178

[www.museesvilledieu.sitew.com](http://www.museesvilledieu.sitew.com)

Adults 4€, Children 2€\*



\*Combined ticket for the Museum of copper pans and lace and the Museum of Norman Furniture:  
Adults 5€ and Children 2.50€





# Traditional Craftsmanship

## Copperware manufacturers and retailers

As you will discover from the Copper Workshop and the Museum of Copper Pans & Lace, the copperware factory demonstrates the range of specialist know-how required for working copper. Their products are available from the many shops and workshops specialising in this craft.



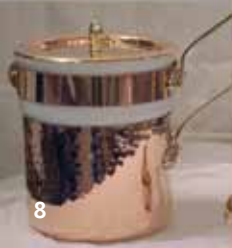
### AJM Couetil

Copper cookware and tableware  
Rôtisseries and bar-b-ques  
2 rue Carnot  
☎/Fax. +33 (0)233 518 822  
[www.cuivre-couetil.fr](http://www.cuivre-couetil.fr)



### La Boutique du Dinandier

Come and discover the unique universe of: La Boutique du Dinandier, manufacturer of copper weather vanes, jam-making pans etc. Other items made to order.  
33 place de la République,  
☎ +33 (0)233 504 279  
[www.laboutiquedudinandier.com](http://www.laboutiquedudinandier.com)



### Multiform

32, route de la Foulurie,  
☎ +33 (0)233 610 128  
[www.multiform.fr](http://www.multiform.fr)

**Note:**  
Only copper items stamped are  
the genuine article made in  
Villedieu-les-Poêles



# Exceptional: 3 great workshops open to the public !

## THE COPPER WORKSHOP

You will marvel at the skills and techniques of the copper chasers, tinkers, polishers and smiths as well as those of two of the best manual workers in France. To make your visit more enjoyable, the Copper Workshop shows a 15 minute film (in French, English or German) and there is also a guided tour.

“

*This is one of the  
oldest workshops  
still operating in  
Villedieu-les-Poêles.”*



54 rue du Général Huard  
Open all year from Monday to  
Friday from 9h to noon and from  
13h30 to 17h30. Saturday after-  
noon: 14h to 17h

+ 33 (0)233 513 185  
[www.atelierducuivre.com](http://www.atelierducuivre.com)  
Adults 5.20€, children 3.50€\*

**\* Combined ticket for the  
Copper Workshop and House  
of Pewter:  
adults 9€, children 5€**





## THE HOUSE OF PEWTER

Travel through the ages, from the Jules Brateau pewter collection to contemporary work. Pewter has been used since time immemorial. In the Middle Ages it was used extensively for tableware, instruments and as containers for medical and chemical products. The use of pewter was widespread in the fifteenth, sixteenth and seventeenth centuries and then declined with the development of the china industry in the late seventeen hundreds.

15 rue du Général Huard

Open :

**July-August:** Tuesday to Saturday 9h to noon and from 13h30 to 17h30 continuous visits

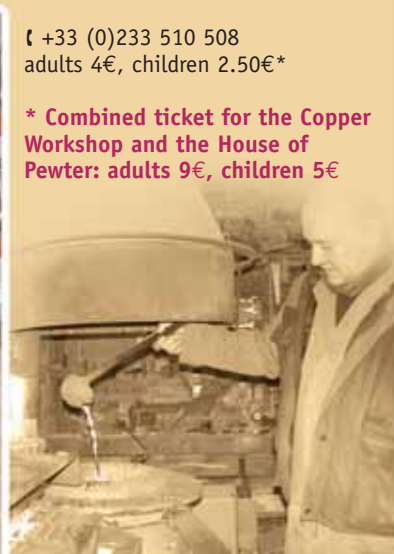
**May-June-September:** Tuesday to Saturday: visits: 11h, 15h and 16h30

**March-April-October:** By appointment

**November-February:** Closed

☎ +33 (0)233 510 508  
adults 4€, children 2.50€\*

**\* Combined ticket for the Copper Workshop and the House of Pewter: adults 9€, children 5€**



“ *Superlative skills: an amazing, entertaining visit.* ”

## BELL FOUNDRY

In this pleasant workshop still in activity, the secrets of the foundry hold many surprises for those of all ages. At the end of your visit, you can strike the bells with a mallet and listen to the rich harmonious melody that they create.

10 rue du Pont Chignon

Open:

**9<sup>th</sup> February to 10<sup>th</sup> November**

Tuesday to Saturday from 10h to 12h30 and 14h to 18h

**13<sup>th</sup> July to 29<sup>th</sup> August**

daily from 9h to 18h

Adults 5€, Children 4€

[www.cornille-havard.com](http://www.cornille-havard.com)

☎ +33 (0)233 610 056



## OTHER ARTISANAL CRAFTS

**New for 2010**

**L'Atelier du Souffleur de Verre** (*Artisan creator of hand-made glass-blown lamps, vases etc...*)

Shop/workshop open: 10h-12h30  
& 14h-18h30 - every day except Monday

4 place du Pussoir Fidèle - 50800 Villedieu  
☎ +33 (0)233 507 289  
atelierduverrevilledieu@orange.fr



### La Cour du Peintre

Allan's studio has moved to larger premises. Discover his new works in oil, watercolour, serigraphy and etchings... opening in spring 2010. Well worth a visit !

8 bis rue général de Gaulle  
50800 Villedieu  
☎ +33 (0)250 816 284  
+33 (0)661 861 994  
www.allan-stephens.eu



### Villedieu Pottery : stoneware in all its facets

You will be given a warm welcome by the Potters, Mr and Mrs Hassan, and impressed by their colourful shop.

1 rue du Docteur Havard  
50800 Villedieu  
☎ +33 (0)233 909 036





## Children's activities

**Pottery lessons and pottery workshop**  
**Eve Hassan invites you to discover her workshop in full colour.**

This young creator introduces children and parents alike (or just children) to the art of pottery making.

10 rue du Pont Chignon

☎ +33 (0)233 909 036 - +33 (0)617 461 450

### The Swimming Pool

The new pool is the place to have lots of fun, with a giant water slide, another bigger pool for the more serious swimmer and a sauna.

#### Summer opening hours:

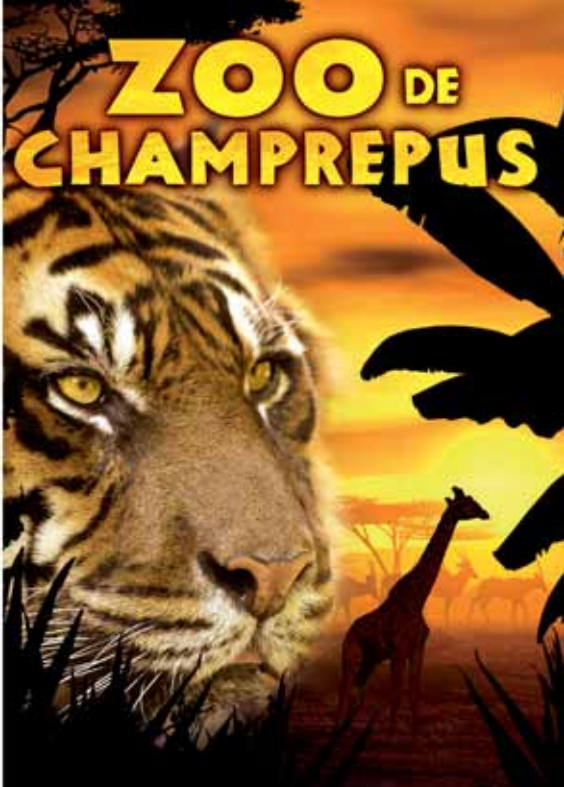
Monday and Thursday from 10h to 13h30 and from 14h30 to 18h30.

Tuesday, Wednesday and Friday from 14h30 to 18h30 and from 20h to 22h.

Saturday from 14h30 to 18h30, Sunday from 9h to 12h and from 15h to 18h.

**For out-of-season hours** please contact:

+33 (0)233 501 700 or: [www.piscine-villedieu.com](http://www.piscine-villedieu.com)



### Zoo at Champrépus (8km from Villedieu)

The zoo is set against a botanic landscape, young and old will appreciate the enthusiasm of the staff who are friendly and approachable with a commitment to the world of animals and the environment. You'll enjoy a few hours in another world and learn so much.

Open every day:

- from 6<sup>th</sup> February to 7<sup>th</sup> March

every day from 11h to 18h

- from 1<sup>st</sup> April to 30<sup>th</sup> September

every day from 10h to 19h

- **October: week-ends only**

from 11h to 18h

- **During All Saints holiday period**

from 11h to 18h.

Adults 13.20€, Teenagers 11.50€,

Children 7.50€

☎ +33 (0)233 613 074

[www.zoo-champrepus.com](http://www.zoo-champrepus.com)



[zoo-champrepus.com](http://zoo-champrepus.com)  
**Villedieu-les-Poêles**





## New for 2010

Stroll along the pedestrian footpaths and discover this delightful region with the aid of our new signposts. Also useful for those wishing to go on horseback or cross-country bike riding.

Vital for hiking and cycling and horse-riding: the "Topoguide du Pays Sourdin" (foot-path Guide) helping you to explore this lovely region. Paths and deep tracks take you to the heart of the hedged hinterland, its rivers and "longères".

On sale at the Tourist Office, 6€



# Hiking and walking

## Discover the local community and its towns

**Bourguenolles:** Two illustrious personalities were born here: Guillaume de Bourguenolles who was the ardent defender of Mont Saint-Michel against the English during the Hundred Years War and Olivier de Longueil who became the Bishop of Coutances in 1453.

**Champrépus** was where Sabinus, one of Caesar's Lieutenants who in 54 BC, defeated Viridorix, the gaulish Chief this, gave way to a permanent Roman settlement in this region.

**Chêrencé Le Héron:** This village whose name is of celtic origin, has an old washhouse and an old bridge called the Priest's Bridge, under which a Royalist priest hid.

**Fleury:** the church is one of the largest in the Avranches region: some parts date back to the 14<sup>th</sup> century. It has a fountain called "la Jaunisse" (jaundice) renowned for soothing liver ailments.

**La Bloutière:** a splendid yew tree over a thousand years old, dominates the entrance to the cemetery. Inside the church is Sainte Venice, patron saint of female ailments.

**La Lande d'Airou:** the town has a 16<sup>th</sup> century wholly classified church dating from 1750. Built in 1869, the Guibel Viaduct is a must and is an ideal place to have a picnic. The river Airou is popular with Anglers.

**La Trinité:** In this village are the remains of a 12<sup>th</sup> century church known as the Opus Spicatum.

**Rouffigny:** After exploring the Church Tower, prayers can be said to the Virgin Mary and Bernadette Soubirous in the little Lourdes grotto.

1 : A longère is a house where in former times, people and their domestic animals lived side by side





# Food and Drink

00

Plan p.4

Where to find  
good local  
produce

## LARGE MARKET

Every Tuesday in the centre town

## CIDER AND CALVADOS PRODUCERS

### - LA CHARMETTE

Cider and pommeau production ; made on the farm in traditional way.

RN175 50800 Beslon - ☎ +33 (0)233 611 166

### - FERME DE LA JANIÈRE



Producer of cider, calvados, pommeau and regional products made on the farm. Free visits to the farm and an introduction to the different varieties of apples. (Member of the association of apple experts) 50800 La Colombe - ☎ +33 (0)233 512 364

### - FERME DE L'HERMITIÈRE

Situated between Villedieu and Granville. Discover the cider ecomuseum on the farm and share in the passion and skill of Jean-Luc Couloubier, producer and farmer. Collection of rare cider making objects displaying a glimpse of rural life during the Middle Ages up to the present.

Open: From Easter to 30<sup>th</sup> June and September: Monday to Friday: 14h-18h

July and August: Monday to Saturday 10h-12h & 14h-18h  
Closed during public holidays

Adults 3.50€, children 14-18 2.50€, children under 14 free  
50320 St Jean des Champs - ☎ +33 (0)233 613 151  
[www.ferme-hermitiere.com](http://www.ferme-hermitiere.com)

## CHITTERLING SAUSAGE PRODUCTION

### - A LA BONNE ENFUMÉE



Chitterling production and only chitterling production ! Free tasting.

19 rue du Gal Huard,  
50800 Villedieu

☎ +33 (0)233 610 265



### - L'ANDOUILLERIE DE LA VALLÉE DE LA SIENNE



Artisanal manufacturer of chitterlings situated just 10km from Villedieu: Guided tours throughout July and August every day (except Saturday morning) at 11h, 15h30 and 17h30. 2.20€ per person

50450 Saint-Denis-le-Gast

☎ +33 (0)233 614 420 - [www.andouillerie.fr](http://www.andouillerie.fr)

### - MAISON LESOUÉF



Opposite the town Hall - sale, production and tasting of Norman specialities: calvados, cider, jam, chitterlings...

(Closed Wednesday - open Sunday)

11 place de la République, 50800 Villedieu

☎ +33 (0)233 610 108 - [www.votre-ville.com](http://www.votre-ville.com)

## DELICATESSEN

### - LA COUR DU PARADIS



Situated in an ancient building dating from the 16<sup>th</sup> century discover the delights of french specialities.

40-44 rue du Dr Havard, 50800 Villedieu

☎ +33 (0)233 505 466 - [www.lacourduparadis.com](http://www.lacourduparadis.com)

## ORGANIC PRODUCE

### - LA FERME DE LA VEILLOTIÈRE

Farm produce: fruit, vegetables and poultry

Open from 14h to 18h Monday to Saturday.

La Veillotière - 50800 La Lande-d'Airou

For special orders telephone: ☎ +33 (0)233 580 904 -  
+33 (0)680 929 926

### - LA FERME DU LOGIS

Farm produce sold every Saturday from 10h30 to 13h

9 route de l'Alambic - 50800 saint-Maur-des-Bois

For organic orders telephone: +33 (0)233 503 054  
+33 (0)672 532 701

## NORMAN INN NEAR VILLEDIEU

### LE MOULIN DE BEAUCHAMPS



Menu: 15.20€ to 18.20€ during the week and "à la carte" at the weekend (60 covers)

Le Pont Neuf - 50800 Champrepus (10km from Villedieu direction Granville).

☎ +33 (0)233 613 077

[www.le-moulin-de-beauchamps.com](http://www.le-moulin-de-beauchamps.com)

## BISTROT IN VILLEDIEU

### 1 A LA POELE DE GARGANTUA



Menu: 11,50€ to 14,50€ (50 covers)

17 rue Général-de-Gaulle

☎ +33 (0)233 905 103 - [www.la-poele-gargantua.com](http://www.la-poele-gargantua.com)

### 2 LE GRENIER

Menu: 9,50€ to 19,50€ - (55 covers)

5 place de la République - ☎ +33 (0)233 610 227

## PANCAKE RESTAURANT

at Villedieu...

### 3 CRÊPERIE DU BOCAGE



Menu: 6€ to 15€ - (40 covers)

10 rue Gal Huard, ☎ +33 (0)233 515 393

<http://perso.orange.fr/lacrepieriedubocage/>

## 4 LA CUISINE DE LÉONIE petit tuto



Menu: 11€ to 13€ (55 covers+terrace)

6 pl. des Chevaliers-de-Malte - ☎ +33(0)233 610 794

### ...near Villedieu

#### CRÊPERIE DE LA BALEINE

Mini-golf - (28 covers + terrace)

le Hamel Soyer, 50 450 La Baleine

☎ +33 (0)233 617 666

## RESTAURANT IN VILLEDIEU

### 5 LE FRUITIER



Menu: 16€ to 35€ (150 covers)

3 rue Jules Ferry - Place des Costils

☎ +33 (0)233 905 100 - [www.le-fruitier.com](http://www.le-fruitier.com)

### 6 LE SAINT PIERRE

Menu: 12,95€ to 35€ (85 covers)

12 place de la République,

☎ +33 (0)233 610 011 - [www.st-pierre-hotel.com](http://www.st-pierre-hotel.com)

### 7 L'AGORA



Menu: 8€ to 21€ (55 covers)

10 Place des Halles,

☎ +33 (0)233 504 304

## 8 A LA TABLE RONDE



Menu: 12€ - (45 covers + terrace)  
8 rue des Cohues - ☎ +33 (0)233 619 927

## 9 LE CONQUISTADOR

Menu: 9,80€ to 17,50€ - (100 covers)  
46 rue Bourg l'Abbesse, ☎ +33 (0)233 610 617

## 10 LE COUSCOUS



Menu: 9€ to 24€ - (30 covers)  
1 rte de Caen - ☎ +33 (0)233 907 213

## 11 LE SAINT-HUBERT



Menu: 8,50€ to 14,50€ - (60 covers)  
9 rue des Cohues, ☎ +33 (0)233 512 429  
heitz.thomas@wanadoo.fr

## 12 LE TRISKELL

Complete menu: 11,50€ - (70 covers)  
2 place du Pussoir Fidèle, ☎ +33 (0)233 519 458

## 13 LE SAMOVAR



Cyber café, sale of tea, coffee and alcohol  
95 rue du docteur Havard - ☎ +33 (0)233 514 673

### ...and near Villedieu

## LE SAINT EVREMOND

Animations on demand - menu: 12,90€ to 25€ (88 covers)  
4 rue du Clos d'Égypte 50450 St Denis le Gast,  
(15km from Villedieu), ☎ +33 (0)233 614 442  
www.hotel-saint-evremond.com

## GOURMET RESTAURANTS

### at Villedieu

## 14 LA FERME DE MALTE

Menu: 18€ to 40€ - (55 covers)  
11 rue Jules Tétrel - ☎ +33 (0)233 913 591  
www.lafermedemalte.fr

### near Villedieu

## LE MANOIR DE L'ACHERIE

Menu: 18€ to 40€ - (60 covers)  
37 rue Michel de l'Épiney 50800 Ste-Cécile,  
(1km from Villedieu),  
☎ +33 (0)233 511 387 - www.manoir-acherie.fr

## LE MOULIN DE JEAN

Menu: 31€ to 47,50€ (60 covers)  
La Lande, 50670 Cuves  
☎ +33 (0)233 483 929 - www.lemoulindejean.com

## PIZZERIA at Villedieu

## 15 AU P'TIT FOUR

Pizzas to take away - menu: 9€  
43 rue du Bourg l'Abbesse - ☎ +33(0)2 33 51 85 21



# Where to stay

00

Plan p.4

## CAMPING

### PARKING FOR MOTOR HOMES

Two motor home sites in Villedieu:

- 1. Place des Quais:** 10 mins drinking water and 55 mins electricity 4€ (coins only). Free draining facilities
- 2. Parc de la Commanderie:** delightful rural area but with no facilities.

### INDIENS ET COWBOYS LAND



4 tipis, 2 wagons, 50€/2 pers and 80€ for 4 pers breakfast 5€, evening meal by reservation (28€/person)  
 Hôtel Valet - 50800 La Lande d'Airou (8km from Villedieu), ☎ +33 (0)233 615 932  
 +33 (0)677 755 173  
[www.indiens-cowboys-land.com](http://www.indiens-cowboys-land.com)

### CAMPING RURAL DE LA PORTE



6 emplacements for tents and motor homes, 15€ including 10amp. electricity, shower and toilet facilities.  
 La Porte - 14380 Courson (15km from Villedieu)  
 ☎ +33 (0)231 680 443  
[www.selfcontainedholidaysnormandy.com](http://www.selfcontainedholidaysnormandy.com)

## HOTELS

### at Villedieu...

1

#### LE FRUITIER



Citotel 48 rooms from 49.50€ to 92.00€  
 3 rue Jules Ferry  
 ☎ +33 (0)233 905 100 - [www.le-fruitier.com](http://www.le-fruitier.com)

6

#### LE SAINT PIERRE



Awarded CAUE architectural prize  
 26 rooms from 46€ to 65€  
 12 place de la République - ☎ +33 (0)233 610 011  
[www.st-pierre-hotel.com](http://www.st-pierre-hotel.com)

10

#### LE CHEVAL NOIR

7 rooms from 25€ to 35€  
 1 rte de Caen, ☎ +33 (0)233 907 213

### ...close to Villedieu

#### LE MANOIR DE L'ACHERIE\*\*



19 rooms from 55€ to 110€  
 37 rue Michel de l'Épinye 50800 Ste Cécile  
 ☎ +33 (0)233 511 387 - [www.manoir-acherie.fr](http://www.manoir-acherie.fr)

#### LE SAINT EVREMOND\*

Animated events on demand, 10 rooms from 34€ to 58€  
 4 rue du Clos d'Égypte 50450 St Denis le Gast  
 (15km from Villedieu) - ☎ +33 (0)233 614 442  
[www.hotel-saint-evremond.com](http://www.hotel-saint-evremond.com)

# RURAL COTTAGES (GÎTES) AND SEASONAL RENTALS

## in Villedieu...

**Mme BATAILLE** 🌿🏡🏡🏡 (Baby welcome)



2 gîtes for 4 people (+cot) - each comprising of 2 bedrooms, 340€ to 540€ per week/per gîte.  
Gîtes du Caquevel - 27 Village du Caquevel  
☎ +33 (0)689 367 220 - [www.gites-lecaquevel.com](http://www.gites-lecaquevel.com)

**Mr & Mme GOSSELIN** 🏡🏡🏡 CLÉ AGANCES



4 people (+cot)/2 bedrooms, 210€ to 370€ per week  
16 rue du Général Huard (town centre)  
☎ +33 (0)233 481 159 - [christian.gosselin23@orange.fr](mailto:christian.gosselin23@orange.fr)

**Mr PORQUET** \*\*



4 people (+cot)/1 bedroom + bunk beds in the lounge,  
280€ to 450€ per week  
Manoir de la Pilière - 4 La Pilière  
☎ +33 (0)233 611 561 - +33 (0)610 343 200  
[www.gites-la-piliere.com](http://www.gites-la-piliere.com)

## ...Near Villedieu

**Mr & Mme LECOMTE Fabrice** 🌿🏡🏡🏡

3 people/1 bedroom, 190€ to 330€ per week  
7 rue du Rouge Palu,  
50800 La Bloutière (5km de Villedieu)  
☎ +33 (0)233 518 547

**Mr & Mme DUFOUR** \*\*\*

2 people/1 bedroom, 150€ to 200€ per week  
La Blanchardière, 14380 St Aubin des Bois  
(7km from Villedieu) - ☎ +33 (0)231 660 411  
<http://monsie.orange.fr/lablanchardiere>

**Mr & Mme LEBOUVIER** 🌿🏡🏡🏡



10 people/ 5 bedrooms, 350€ to 650€ per week,  
La Hervière - 50800 Fleury (6km from Villedieu),  
☎ +33 (0)233 514 750 - [lebouvier.isabelle.173@orange.fr](mailto:lebouvier.isabelle.173@orange.fr)

**Mme GOGO** 🌿🏡🏡🏡

6 people/2 bedrooms (+cot), 240€ to 500€ per week  
Le Domaine, 50870 Braffais (11km from Villedieu),  
☎ +33(0)660 822 280, 33(0)953 221 492  
<http://domainedebraffais.free.fr>

**Mr DESBOUILLONS** 🏡🏡🏡 CLÉ AGANCES



5 people/2 bedrooms, 200€ to 300€ per week  
La Chapelière, 50800 La Trinité (5km from Villedieu)  
☎ +33 (0)233 518 166 - +33 (0)688 344 175

**Mr VIVIER Serge** 🌿🏡🏡



4 people/2 bedrooms (+ cot), 270€ to 450€ per week  
La Malainfandière - 50800 Rouffigny  
☎ +33 (0)619 764 973 - [s.vivier9@laposte.net](mailto:s.vivier9@laposte.net)

**Mr SALLIOT** \*\*



9-10 people (+ cot) / 4 bedrooms, 300€ to 470€ per week  
Le Moulin de Courson, 14380 Courson (10km from Villedieu) - ☎ +33 (0)231 679 456  
[www.gite-le-moulin-de-courson.com](http://www.gite-le-moulin-de-courson.com)

**Mr & Mme DENOLLE \*\***

6 people/3 bedrooms, 280€ to 360€ per week.  
5 rue Baudouin de Mosles, 50370 La Chaise-Baudouin (10km from Villedieu),  
☎ +33 (0)233 481 121 - <http://gite.denolle.fr>

**GITE DE LA PORTE \*\* Mr et Mme Shoosmith**

4 people/2 bedrooms, 300€ to 400€ per week.  
La Porte, 14380 Courson (15km from Villedieu)  
☎ +33 (0)2 31 68 04 43  
[www.selfcontainedholidaysnormandy.com](http://www.selfcontainedholidaysnormandy.com)

**Mr & Mme BOHIN \*\***

4/5 people/1 bedroom, 320€ to 490€ per week  
La Parisière, CD 98, 50450 Gavray (15km from Villedieu), ☎ +33 (0)233 514 123  
[www.laparisiere50.com](http://www.laparisiere50.com)

**Mr HEUDIER \*\***

6 people/3 bedrooms 381€ to 458€ per week  
Le Hamel aux Roux, 50420 St Vigor des Monts (15km from Villedieu), ☎ +33 (0)607 385 712  
<http://pagesperso-orange.fr/lafouquerie>

**Mr MANCEL Zéphyrin\***

10 people (+cot)/3 bedrooms, handicapped access, 250€ to 350€ per week  
2 L'ancien Presbytère, 50370 La Chaise Baudouin (10km from Villedieu), ☎ +33 (0)233 481 220  
[zephyrin.mancel@orange.fr](mailto:zephyrin.mancel@orange.fr)

**Mr & Mme JARDIN**

5-7 people/2 bedrooms (+cot) 190€ to 315€ per week  
La Gilberdière, 50800 La Lande-d'Airou (6km from villedieu), ☎ +33 (0)233 512 809

**Mme BLONDEL\***

6 people/3 bedrooms 265€ to 295€ per week  
57 route des Villages, 50450 Le Mesnil Rogues (15km from Villedieu), ☎ +33 (0)233 613 213

**Mr & Mme HAMILTON\***

3/4 people/2 bedrooms (+ cot), 200€ to 300€ per week  
Le Chalet, rue les Hauts Vents - 50370 Les Cresnays (15km from Villedieu ), ☎ +33 (0)233 489 119  
[louisehamilton36@hotmail.com](mailto:louisehamilton36@hotmail.com)

**Mme LEGOUBE**

3 people/1 bedroom, 225€ to 315€ per week  
Le Castillon, 50320 Folligny (15km from Villedieu), ☎ +33 (0)233 613 910  
<http://www.perso.wanadoo.fr/sebounetino/gite>

**BED & BREAKFAST at Villedieu****Mr MOREL Denis**

6 people/2 rooms, 45€/single, 50€/double  
Jardin de la Baissinière - Route de Gavray  
☎ +33 (0)680 004 337 or +33 (0)233 900 271  
[www.morel-labaissiniere.fr](http://www.morel-labaissiniere.fr)

**Le DOMAINE des CHEVALIERS de MALTE**

12 people/4 rooms , swimming pool 78€ to 150€ double, breakfast 10€  
3 Chemin de la Grange - ☎ +33 (0)233 905 116  
[www.le-fruitier.com](http://www.le-fruitier.com)

## COTTAIS Jean & Nicole



7 people/3 rooms, 36€ single ; 43€ - 45€ double.  
1 rue fontaine minérale, route de Granville,  
☎ +33 (0)233 610 600 - cottais-jn@orange.fr

### ...near Villedieu

#### LE MOULIN DE LA LANDE (4 stars classification on course)



Suite comprising of lounge and kitchen, 4 people/2 rooms 100€/2 people, 150€/4 people, open from 15/04 to 01/11  
Le Bourg, 50800 La Lande-d'Airou,  
☎ +33 (0)633 351 566 - fgalli@secp-france.fr

#### LES 3 RAINETTES (2 épis classification on course)

Mr. et Mme Villard



9 people/3 rooms, kitchenette, 32€ single ; 40€ double  
La Chapellière - 50800 La Trinité (6km from Villedieu)  
☎ +33 (0)250 816 304  
<http://les3rainettes.perso.neuf.fr>

#### Mr & Mme LETELLIER (3 épis classification on course)

4 people/2 rooms, 33€ single ; 39€ double  
La Tête à la Femme, 50450 Gavray (10km from Villedieu)  
☎ +33 (0)233 614 875 - j.letellier@terre-net.fr

#### Mme VIOLET (2 épis classification on course)



5 people/2 rooms, 29€ single ; 38€ to 48€ double  
Le Siquet, 50410 Montbray (10km from Villedieu)  
☎ +33 (0)233 619 728

#### Mr & Mme AUVRAY Jean (3 épis classification on course)



7 people/2 rooms, 27€ single, 37€ double  
La Mazardière, 50510 Le Loreur (20km from Villedieu)  
☎ +33 (0)233 613 002

#### Mr et Mme BOHIN\*\*

9 people/3 rooms, 45€ single, 54€ double, breakfast included, evening meal by reservation (24€/person)  
La Parisière 50450 Gavray (15km from Villedieu)  
☎ +33 (0)233 514 123 - [www.laparisiere50.com](http://www.laparisiere50.com)

#### Mme BINET

4 people/2 rooms, 20€ single ; 30€ double  
Les Vallées 50800 Beslon (5km from Villedieu)  
☎ +33 (0)233 611 159

#### LES LOGIS DU MANOIR



Farm supplying organic produce, 10 people/5 rooms, 40€ - 50€ single, 45€ - 55€ double, evening meal by reservation €16/person  
9 route de l'Alambic - 50800 Saint-Maur-des-Bois (6km from Villedieu)  
☎ +33 (0)2 33 50 30 54 - [www.leslogisdumanoir.com](http://www.leslogisdumanoir.com)

#### INDIENS ET COWBOYS LAND - Mr et Mme Eudes



8 people/3 rooms, 60€ double, 80€/4 person, breakfast 5€, evening meal by reservation : 28€  
Hôtel Valet - 50800 La Lande-d'Airou (8 km from Villedieu)  
☎ +33 (0)6 77 75 51 73 - +33 (0)2 33 61 59 32  
[www.indiens-cowboys-land.com](http://www.indiens-cowboys-land.com)

### Mr MANCEL



4 people/2 rooms (+ cot), 12€ single, 24€ double + 4€ breakfast

2 l'ancien Presbytère, 50370 La Chaise Baudouin (10km from Villedieu), ☎ +33 (0)233 481 220  
[zephyrin.mancel@orange.fr](mailto:zephyrin.mancel@orange.fr)

### CHAMBRE D'HÔTE DE LA PORTE

#### Mr et Mme Shoosmith

4 people/2 rooms, 30€ single, 45€ double, La Porte - 14380 Courson (15km from Villedieu)

☎ +33 (0)2 31 68 04 43

[www.selfcontainedholidaysnormandy.com](http://www.selfcontainedholidaysnormandy.com)

### Mr & Mme BEVINGTON



8 people/4 rooms, 42€ to 50€ single, 42€ to 60€ double evening meal by reservation (25€ per person)

Maison Quesnel, 7 Place Jeanne Paisnel, 50450 Hambye (14km from Villedieu),

☎ +33 (0)233 508 925

[www.maisonquesnel.com](http://www.maisonquesnel.com)

### Mme DECOURCY Elisabeth



8 people in 4 rooms, from 40€ to 50€ double

La Fouquerie, 50420 Tessy-sur-Vire (15 km from Villedieu),

☎ +33 (0)233 563 265 - +33 (0)684 665 480

[perso.wanadoo.fr/lafouquerie](http://perso.wanadoo.fr/lafouquerie)

### Mme COWLING



2 people/1 room, 45€ single 60€ double

La Lande, 50450 Le Chefresne (8km from Villedieu)

☎ +33 (0) 233 590 054 - [www.lechefresne.com](http://www.lechefresne.com)

### Mme GORON



8 people/4 rooms 40€ single, 40€ double, evening meal by reservation (15€)

Le Bourg, 50800 Saint-Martin-le-Bouillant

(10km from Villedieu)

☎ +33 (0)233 512 989 - +33 (0)637 232 038

[www.votrechambrehotte.com](http://www.votrechambrehotte.com)

### Mr & Mme DURECU, Château de Fontenermont



9 people/3 rooms (+cot) - 40€ double, 50€ per 4 persons

Le bourg - 14380 Fontenermont

(9km from Villedieu) - ☎ +33(0)231 692 162

[www.chateaufontenermont.com](http://www.chateaufontenermont.com)

### Mme DUCHEMIN



7 people/3 rooms 29€ single, 36€ double

Le Bourg, Les Aubrées, 50800 Champrépus

(8km from Villedieu) - ☎ +33 (0)233 614 807

+33 (0)648 708 908

# Practical guide

## ANTIQUÉ SECOND HAND SHOPS

---

### **BROC 50**

10 Bis route de Vire - 50800 Villedieu  
☎ +33 (0)233 517 777 - broc50@club-internet.fr

### **OCCAS'SOURDINE**

10 route de Vire - 50800 Villedieu  
☎ +33 (0)233 517 699 - occasourdine@wanadoo.fr

## ARCHITECT

---

### **EURL Michel Gourion**

La Rousselière, B.P. 9, 50800 FLEURY  
☎ +33 (0)233 918 585 - www.michelgourion.com

## BANK

---

### **CREDIT AGRICOLE**

29 rue Général de Gaulle - 50800 Villedieu  
☎ +33 (0)825 840 390

## COACH OPERATOR

---

### **VILLEDIEU EVASION**

ZI La Foulerie - 50800 Villedieu  
☎ +33 (0)233 902 899 - www.villedieu-evasion.fr

## COMPUTER SHOP

---

### **PC MANIA**

51 rue Jules Tétrel - 50800 Villedieu  
☎ +33 (0)233 695 836 - www.pcmانيcenter.com

## COPPER MANUFACTURER SHOPS

---

### **EURL Besnier**

La Davière, 14380 St AUBIN des Bois  
☎ +33 (0)231 660 520 - eurl-besnier@orange.fr

## ESTATE AGENT/SOLICITOR

---

### **SCP TATARD MAYEUX LECORDIER**

12 rue Jules Ferry - 50800 Villedieu  
☎ +33 (0)233 610 077  
tatard.mayeux.lecordier@notaires.fr

## FLORIST

---

### **ROYAL'FLEUR**

1 rue Général de Gaulle - 50800 Villedieu  
☎ +33 (0)2 33 61 02 10 - fax +33 (0)2 33 61 15 51

## GARDEN CENTRE

---

### **POINT VERT le Jardin**

Rond Point des Estuaires - 50800 Villedieu  
☎ +33 (0)233 912 500

## HABERDASHERY AND TOY SHOP

---

### **TENDANCES**

16 rue Jules Ferry - 50800 Villedieu  
☎ +33 (0)233 511 379

## HAIRESSER

---

### **COIFFURE MICHELE**

5 rue Gambetta - 50800 Villedieu  
☎ +33 (0)233 519 444

## INSURANCES COMPANY

---

### **Cabinet PAULMIER**

La Hautmonnière - rte de Granville - 50800 Villedieu  
☎ +33 (0)233 610 179  
www.assurances-paulmier.com

## NEWSAGENT

---

### **PRESSE LIBRAIRIE DES CHEVALIERS**

1 place des Chevaliers-de-Malte - 50800 Villedieu  
☎ +33 (0)233 610 121 - contact@presse-chevaliers.com

## OPTICIANS

---

### **BOUCHAUDON**

15 rue du Général de Gaulle - 50800 Villedieu  
☎ +33 (0)233 512 296  
optique.bouchaudon@wanadoo.fr

## PRINTERS

---

### **Imprimerie RENOUVIN**

7 bis Z.I. les Vallées - 50800 Villedieu  
☎ +33 (0)233 513 095  
sarl.renouvin@wanadoo.fr

## SHOE SHOP

---

### **CHAUSSURES SIMON**

14 place de la République - 50800 Villedieu  
☎ +33 (0)233 610 023  
chaussures.simon@cegetel.net

## SUPERMARKET

---

### **INTERMARCHÉ-LOGIMARCHÉ**

Rond pont des Estuaires - 50800 Villedieu  
☎ +33 (0)233 611 550 - www.intermarche.com

# Pastimes in Southern Manche

## ÉQUITATION

### CENTRE ÉQUESTRE DU VAL DE SIENNE

National School of Riding  
Les Vallées - 50450 GAVRAY  
☎ +33 (0)233 504 608  
[www.valdesienne-equitation.fr](http://www.valdesienne-equitation.fr)



### CHEVAL PLEINE NATURE

Équitation alternative - Mr Héron Philippe  
Le Bourg - 50870 Braffais - ☎ +33 (0)233 488 238  
[www.chevalpleinenature-e.monsite.com](http://www.chevalpleinenature-e.monsite.com)

## AQUARIUM

### LE ROC DES HARMONIES

Pointe du roc - 1 bd de Vaufleury - 50400 Granville  
☎ +33 (0)233 501 983  
[www.aquarium-du-roc.com](http://www.aquarium-du-roc.com)



## LEISURE/AMUSEMENT PARKS

### MINIGOLF - PARC BOTANIQUE DE LA BALEINE & PANCAKE RESTAURANT

le Hamel Soyer - 50450 La Baleine  
(12km from Villedieu)  
☎ +33 (0)233 617 666

### COBAC PARC



RD 75 - 35720 Lanhelin  
☎ +33 (0)299 738 016  
[www.cobac-parc.com](http://www.cobac-parc.com)

### L'ANGE MICHEL

Parc de Loisirs et d'attractions  
50730 Saint-Martin-de-Landelles  
☎ +33 (0)2 33 49 04 74  
[www.ange-michel-attractions.com](http://www.ange-michel-attractions.com)



## HIKING IN MONT SAINT-MICHEL BAY

### CHEMINS DE LA BAIE DU MONT SAINT-MICHEL

Qualified guide  
34 rue de l'Ortillon - 50530 Genêts  
☎ +33 (0)233 898 088  
[www.chemindelabaie.com](http://www.chemindelabaie.com)

## MONT SAINT MICHEL BAY FROM THE SKY

### ULM DIDIER HULIN

Aérodrome du Val Saint-Père - 50300 Avranches  
☎ +33 (0)233 486 748 - +33 (0)607 549 192  
[www.ulm-mont-saint-michel.com](http://www.ulm-mont-saint-michel.com)

## FERRY CROSSINGS TO THE CHANNEL ISLANDS

### MANCHE ILES EXPRESS

Gare Maritime - 1 rue des Iles - 50400 Granville  
Reservations: ☎ +33 (0)825 133 050  
[www.manche-iles-express.com](http://www.manche-iles-express.com)

# Villedieu les Poêles

## Normandy



**A84 Motorway junctions 37 & 38**  
**Villedieu 20 mins from Avranches**  
**30 mins from Granville**  
**50 mins from Caen (Ferry & plane links to England)**  
**35 mins from Mont Saint-Michel**  
**1h from St-Malô, Cancale**  
**1h from D-Day beaches**  
**3h from Paris**

### TOURIST OFFICE

BP 32 - 8 Place des Costils - 50800 Villedieu-Les-Poêles

Tel: +33 (0)233 610 569

Website: [www.tourisme-villedieu.com](http://www.tourisme-villedieu.com) - E-mail: [contact@ot-villedieu.fr](mailto:contact@ot-villedieu.fr)

### OPENING TIMES

From October to March Monday to Saturday from 9h30 to 12h & from 14h to 17h30

Daily from April, May, June and September from 9h30 to 12h30 & from 14h to 18h

July & August from Monday to Sunday 9h30 to 18h

